



**EMERALD PALACE  
INTERIOR  
DECORATION**

**PRE -QUALIFICATION  
DOCUMENT**

[www.epghotelsresorts.com](http://www.epghotelsresorts.com)

**KEMPINSKI RESIDENCES & HOTEL APARTMENTS**

**Add:** Crescent West, Palm Jumeirah, P.O. Box: 214484, Dubai, UAE

**Tel:** +971 4 444 2938 | **Email:** [info@epidecor.com](mailto:info@epidecor.com) | **Web:** [www.epghotelsresorts.com](http://www.epghotelsresorts.com)



## Company Profile

**Emerald Palace Interior Decoration (EPI)**, established in 2018 and headquartered in Kempinski Residence & Hotel in Palm Jumeirah, U.A.E. a sister company of Emerald Palace Group (EPG) which is a strategic business partner of Kempinski Hotels S.A.

The company has become the synonym of luxury in the world of hospitality projects, interior fit out and FF&E. Ever since its inception, the company has been committed to excellence. The team includes some of the best architects and engineers to ensure the impeccable execution of every single project. The final outcomes stand as evidence of the strategy's effectiveness. The company believes in the importance of offering comprehensive solutions. Because of this commitment, EPI is currently specialized in the provision of design and build high-end, luxury and large-scale five-star hospitality hotels and resorts projects.



## Vision

To deliver sustainability, profitability and performance to our clients, shareholders and employees and ensure that we leave a positive impact as an interior contractor that can be relied on.

## Passion

The Interior solution is our primary focus. By adhering to the strictest industry standards and bringing an innovative vision to reality, we aim having a positive impact on the Dubai hospitality industry.



## Mission

To meet our respective clients needs with the highest level of quality and punctuality, we will always put our level best in order to respect the clients target dates and ensure that they are achieved.



**Mr. Nver Mkhitaryan**

It is my pleasure to be able to report on another year of productivity by Emerald Palace Group. The Group's aim is to deliver long lasting relations with the consumer in various sectors that we are immersed with. The Group has been able to provide the highest form of comfort and hospitality with its branch of Five star Kempinski hotels that over the years has established itself as a brand name.

## Our Chairman's Message

Moreover, the Group is never limited to just the local market but was also able to be well known internationally for its various services in all sectors of hospitality and accommodation. Through our strong operation team the group will never seem to disappoint and will only keep moving forward with only one vision which is to be the leading firm in the region.

With the introduction of our new interior department which now form of our renowned construction firm, I believe that it will further fall into the footsteps of the original company and prove to be a company that is able to deliver the finest quality of projects.

I would like to thank the Emerald Palace Group for its continued growth and productivity, The hard work and contribution of each and every member is highly appreciated it wouldn't have been done if it wasn't for them. Our vision is to always excel in all sectors of our firm and I trust with the capabilities and facilities we have I doubt we shall ever present what is less than excellence.



## Our CEO's Message

We have established our own Emerald Palace Interior Decoration Fitout firm that falls under the EPG umbrella, supported by a team of well experienced managers and engineers it shall ensure that it has an echo in both the local and international market known not only for executing our projects but also our respected clients . Today, they've taken the company to a place of growth and expansion – a new chapter in the history of the Group. While we're steadily moving forward, I also believe in the importance of staying true to our heritage. It includes a focus on key tourist destinations, sustainable growth, adherence to the best industry standards and the development of a multiskilled team that takes pride into bringing the Company vision to reality. I believe that we will continue doing so in the years to come, elevating our work to the next level by adding our Interior Fitout company that along with our experienced team with never fail to provide less than expected.

Every single project adds to our experience and expertise and is valued and cherished because of the effort, the thought and the planning that have gone in the development process. The trust of partners, shareholders and investors has helped us move forward and we value their input greatly. We've gotten multiple opportunities through the years and we appreciate every single instance in which trust has been put in our hands. I know that the Group will keep on delivering consistently because we're already well-established and confident in our market niche. Our goal is to keep bringing investors high returns and to keep on planning strategic projects that will expand our quality portfolio even further and elevate our Interior Fitout Firm to hopefully reach international standards.



**Mr. Attallah Salman**

## YEAR OF PROGRESS & PRODUCTIVITY

Our corporate strategy and mission are governed by a number of key concepts – super luxury, the highest execution quality of every single development, the provision of expertise-based solutions and passion for the work that we do every single day.



# OUR COMPLETED PROJECTS



# HOTELS

**Raffles**  
The Palm, Dubai



**Raffles**  
The Palm, Dubai



**Raffles**  
The Palm, Dubai



**Raffles**  
The Palm, Dubai



**Raffles**  
The Palm, Dubai



**Raffles**  
The Palm, Dubai



**HYDE Hotel**  
Dubai - U.A.E



**HYDE Hotel**  
Dubai - U.A.E





**HYDE Hotel**  
Dubai - U.A.E



**HYDE Hotel**  
Dubai - U.A.E



# RESTAURANTS

Cleo



## Cleo



## Katsuya

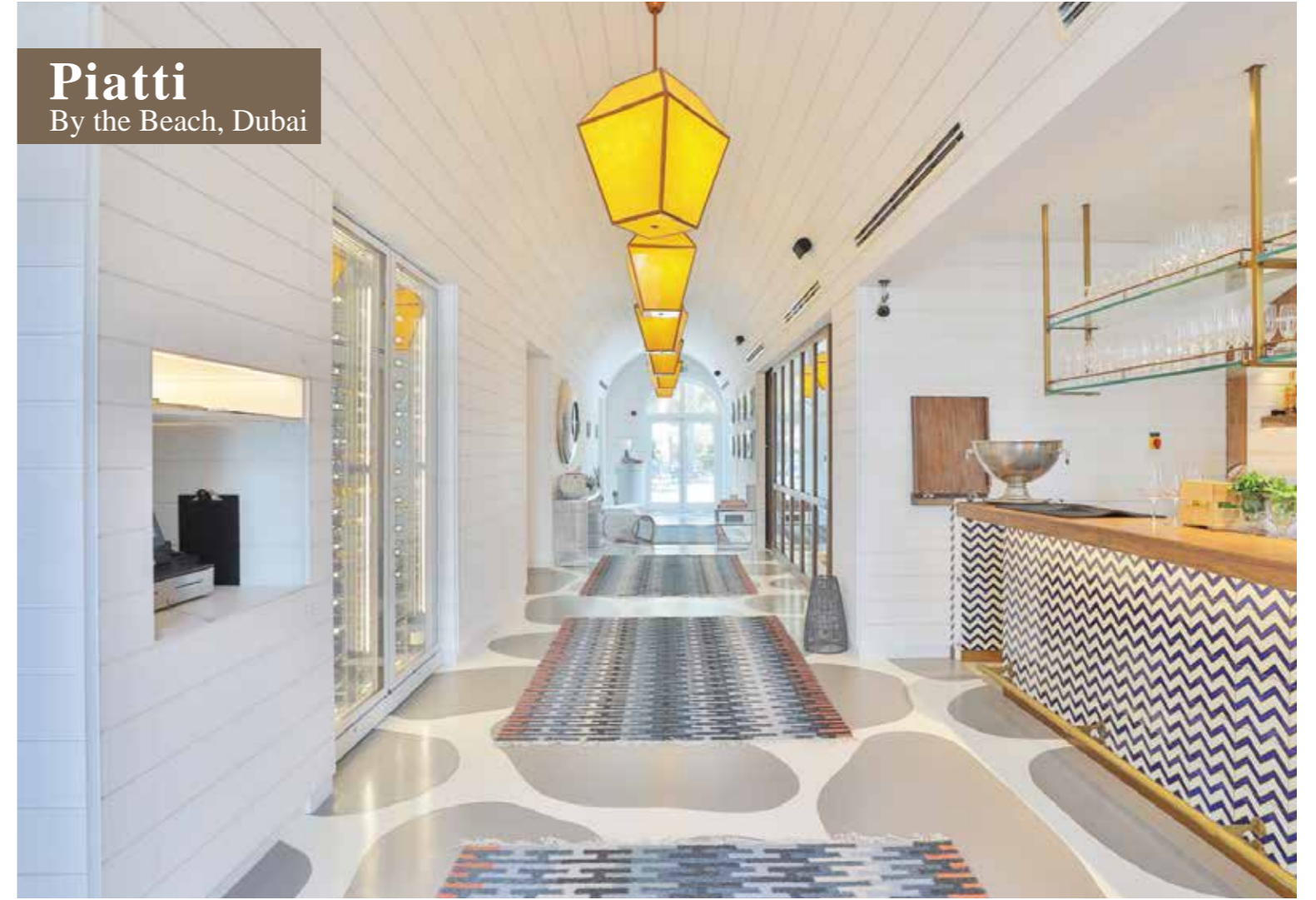


# Katsuya

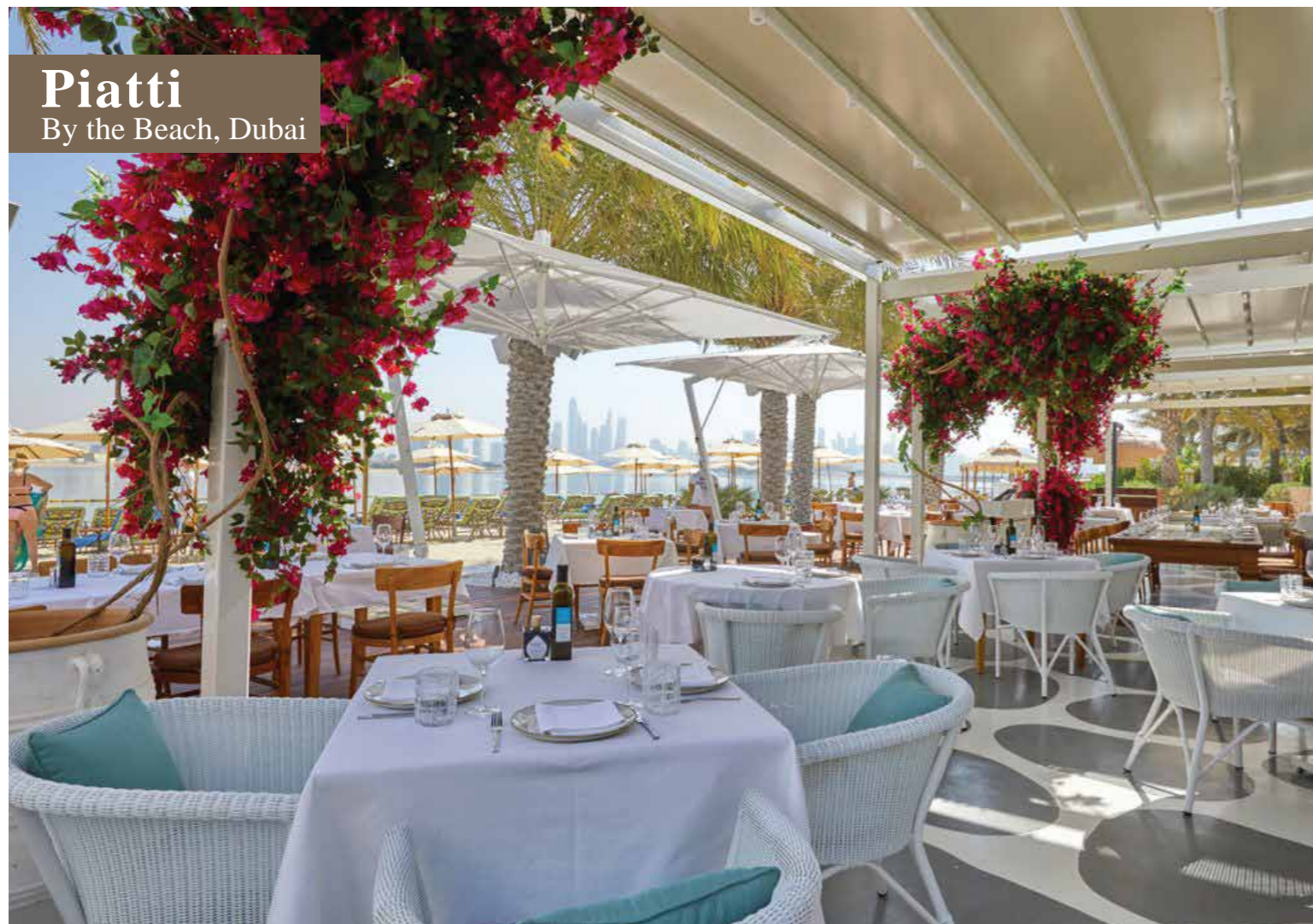


# Piatti

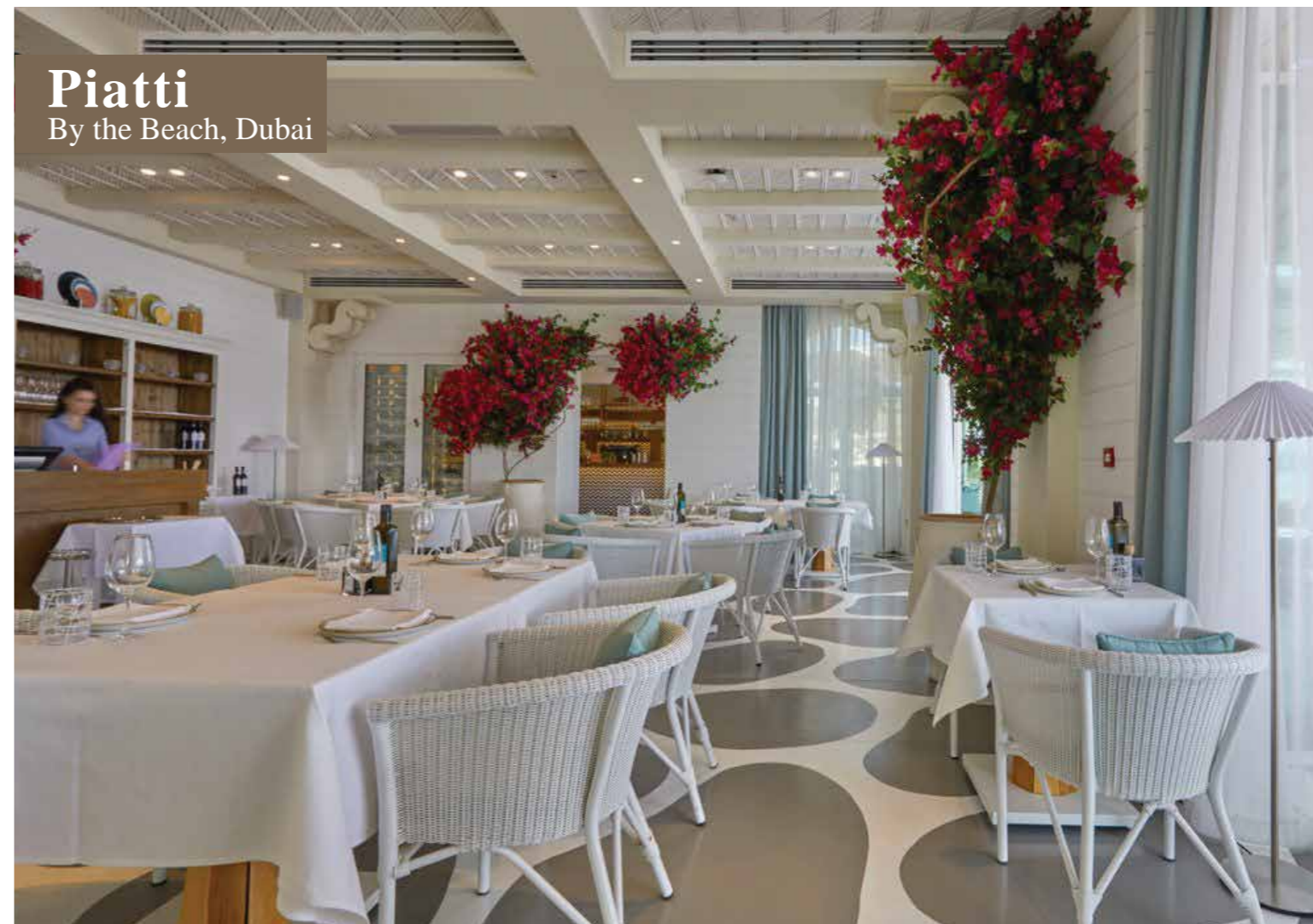
By the Beach, Dubai



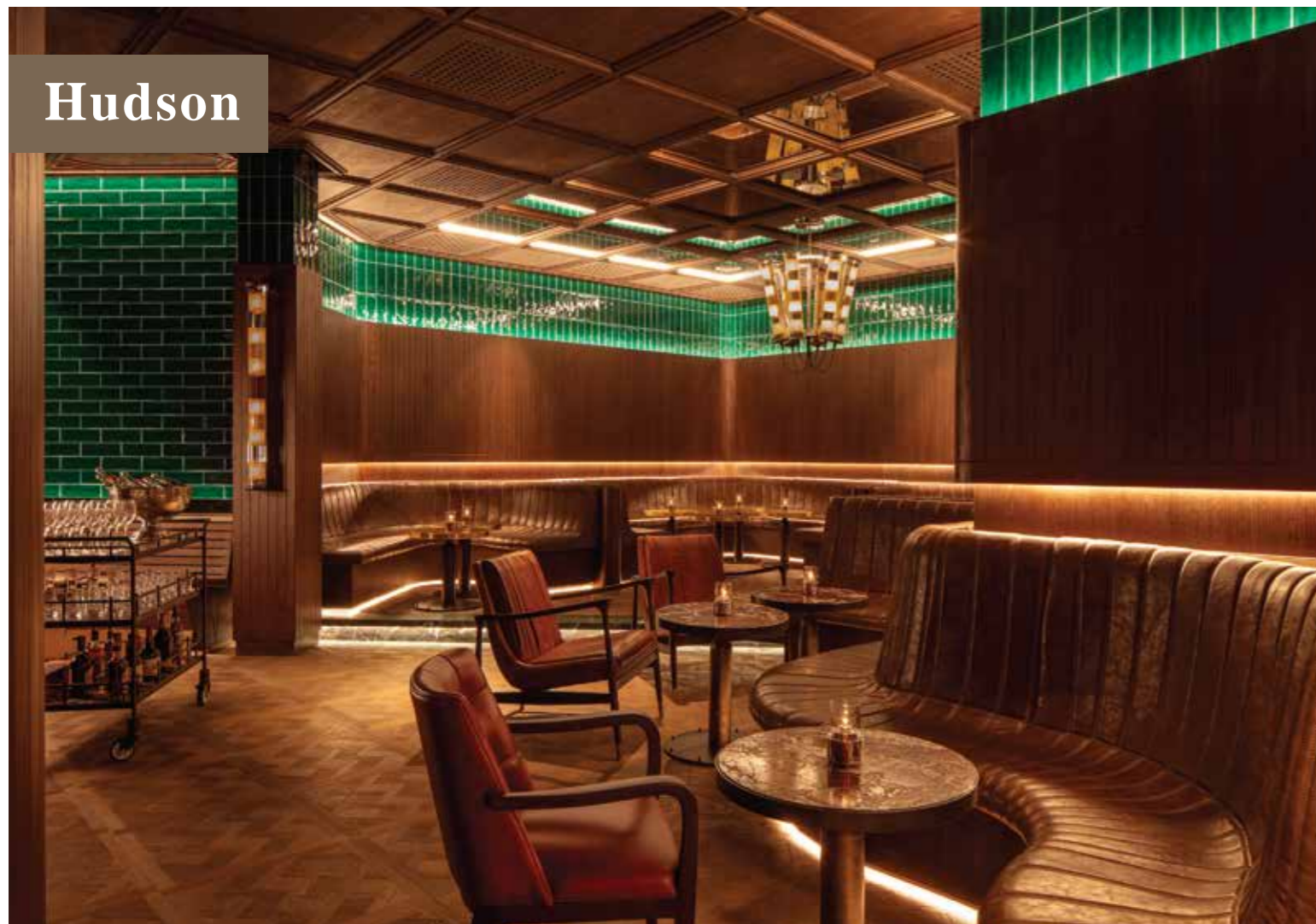
**Piatti**  
By the Beach, Dubai



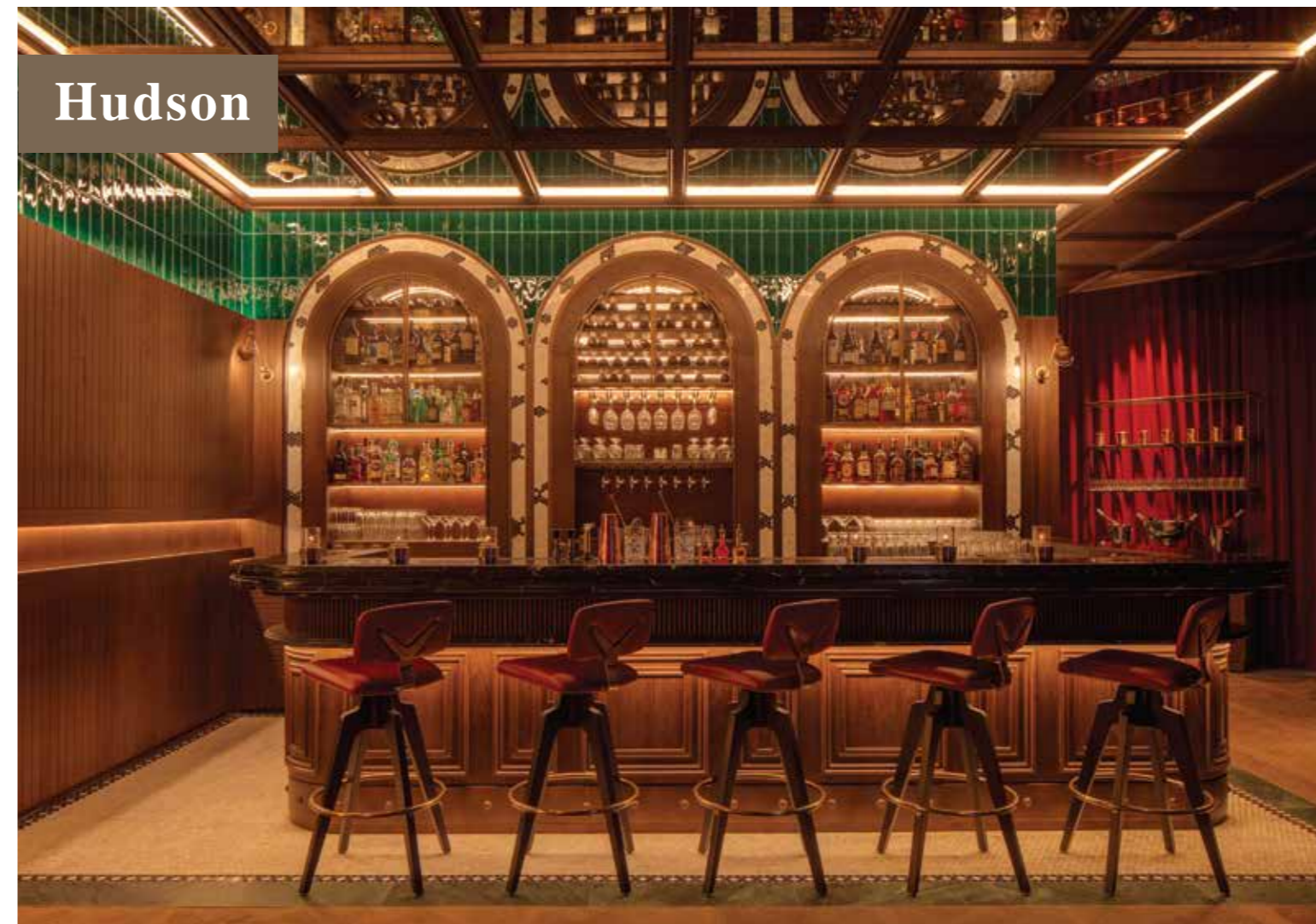
**Piatti**  
By the Beach, Dubai



# Hudson



# Hudson



## Villamore



## Villamore



# RETAILS





# Patisserie



# Patisserie



# WELNESS

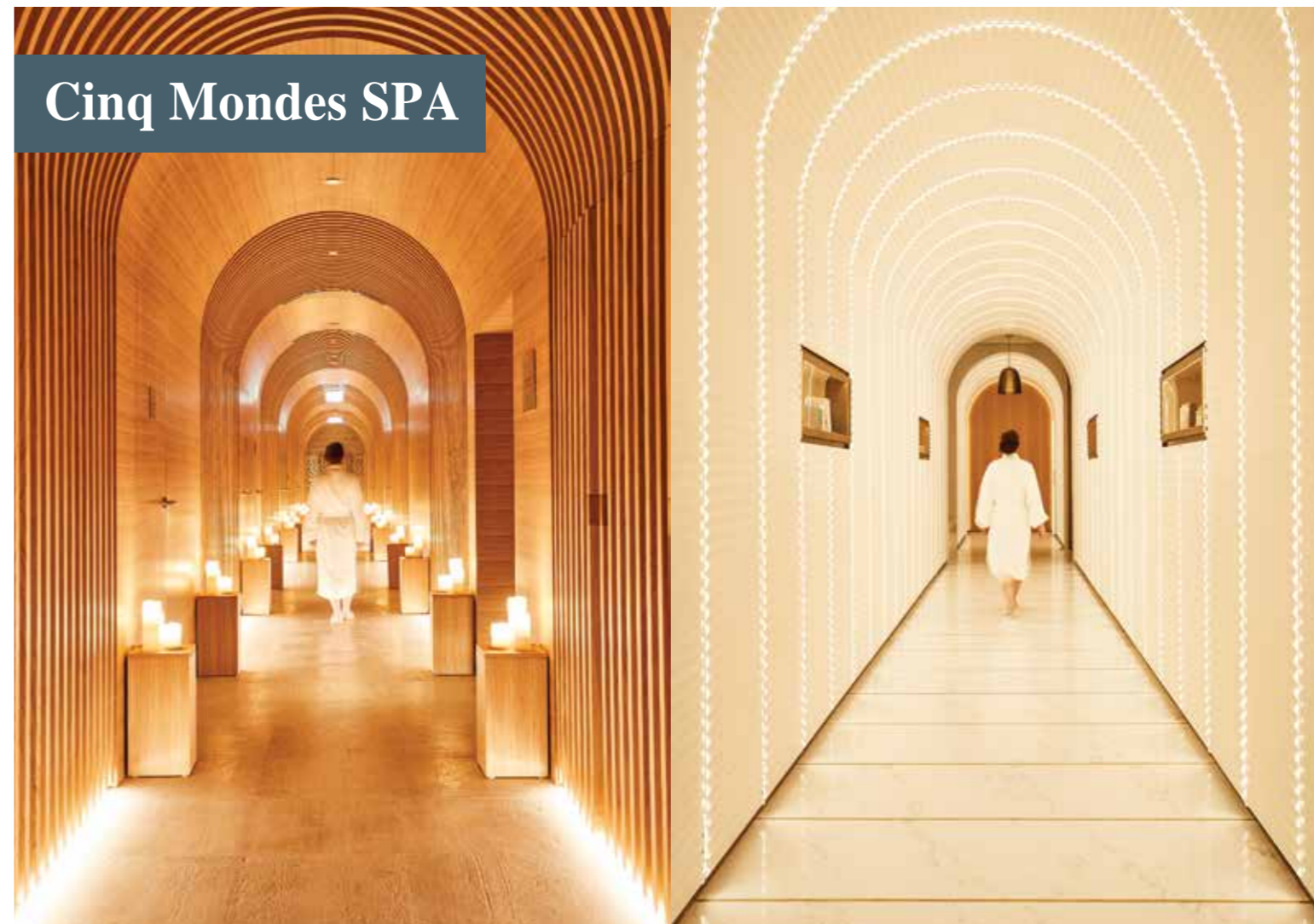
## Cinq Mondes SPA



## Cinq Mondes SPA



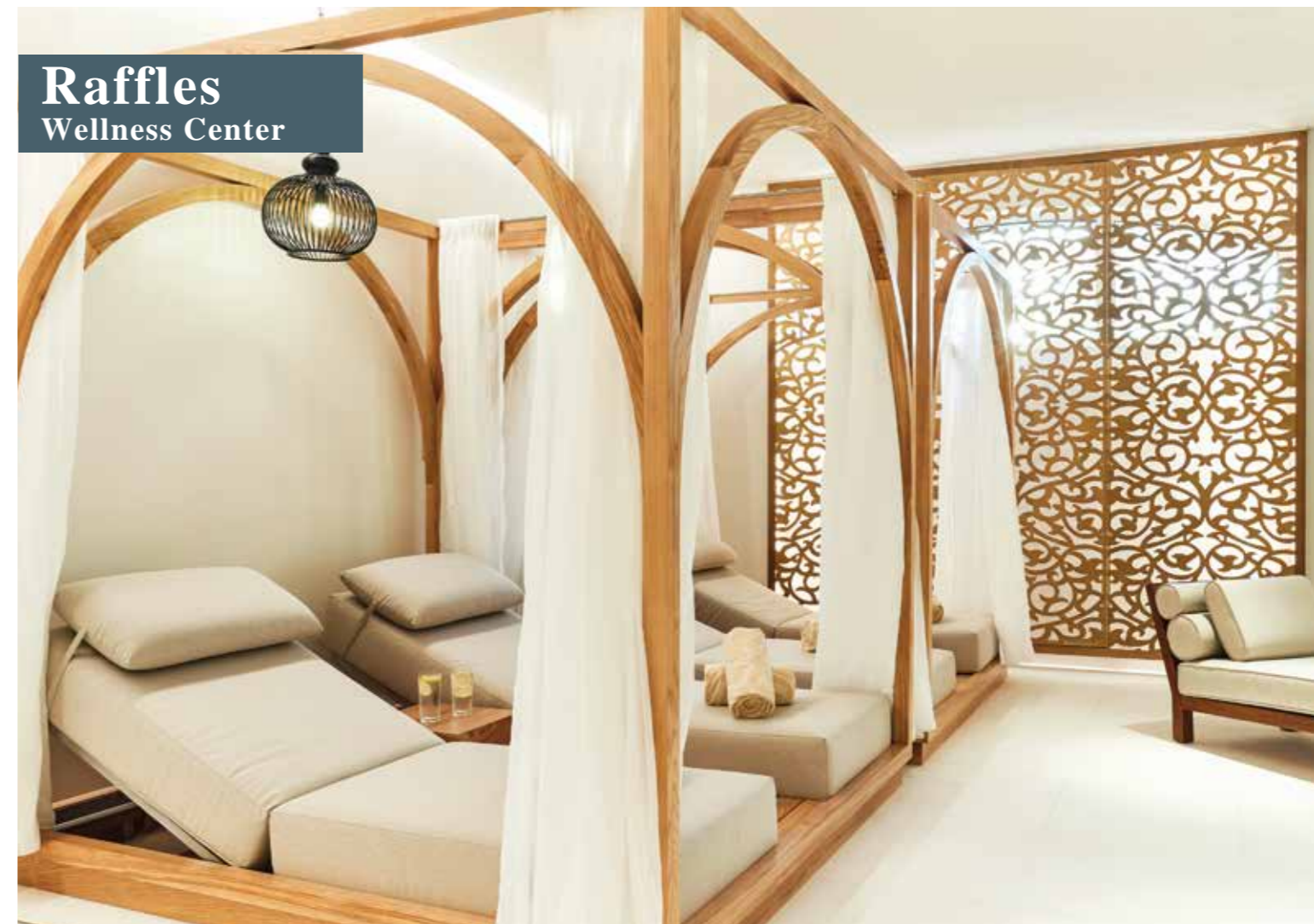
## Cinq Mondes SPA



## Cinq Mondes SPA



## Raffles Wellness Center



**Raffles**  
Wellness Center



**Raffles**  
Wellness Center



**Raffles**  
Indoor Pool

